

COUNTY OF **SAN MATEO**



SAN MATEO COUNTY HEALTH
**AGING & ADULT
SERVICES**

Serving and Protecting San Mateo County's Older Adults and Individuals Living with Disabilities

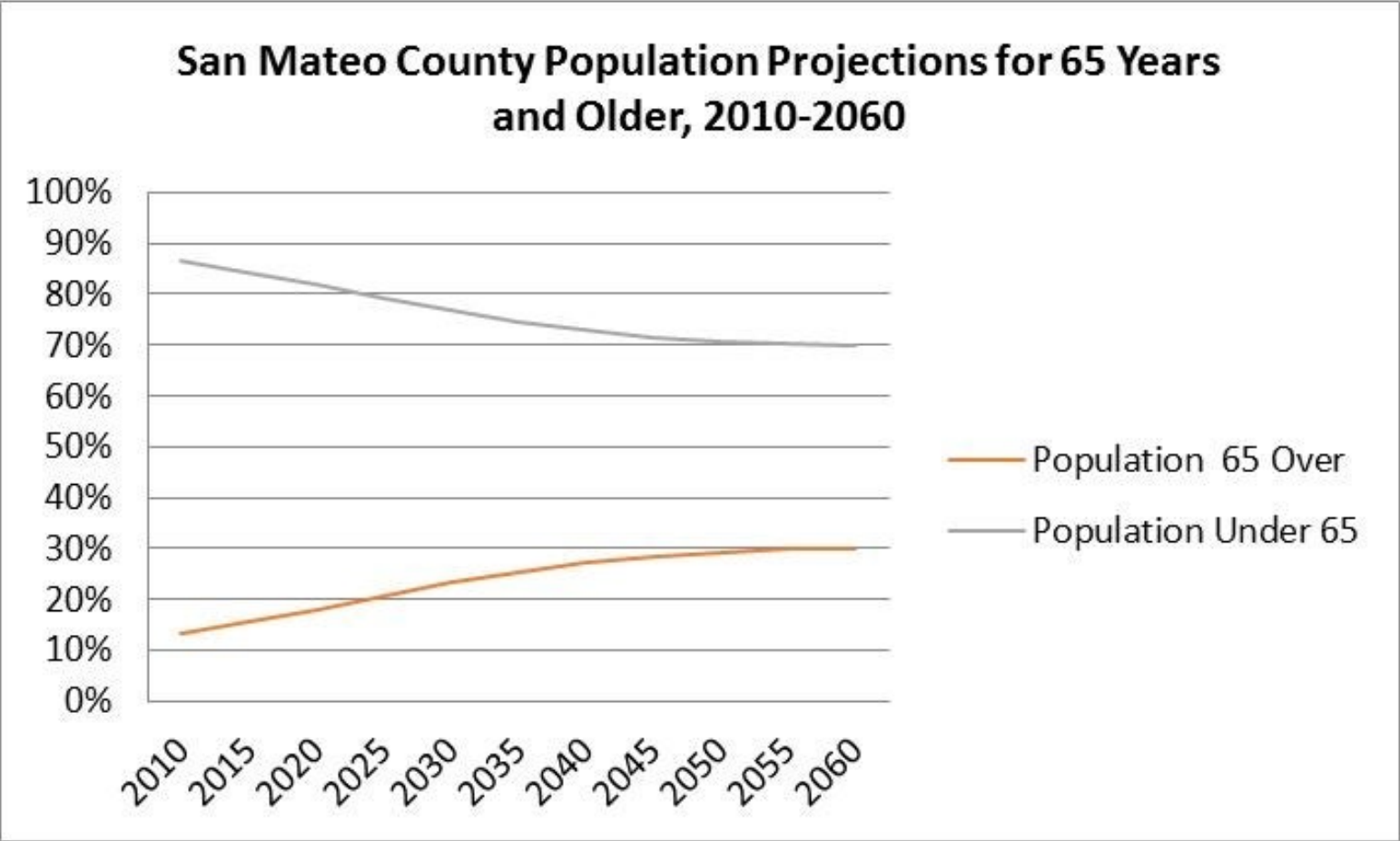
Dyshun Beshears and Nina Rhee
Civics 101/September 6, 2023

AAS True North

Optimize the quality of life
for older adults and
people with disabilities in
San Mateo County.

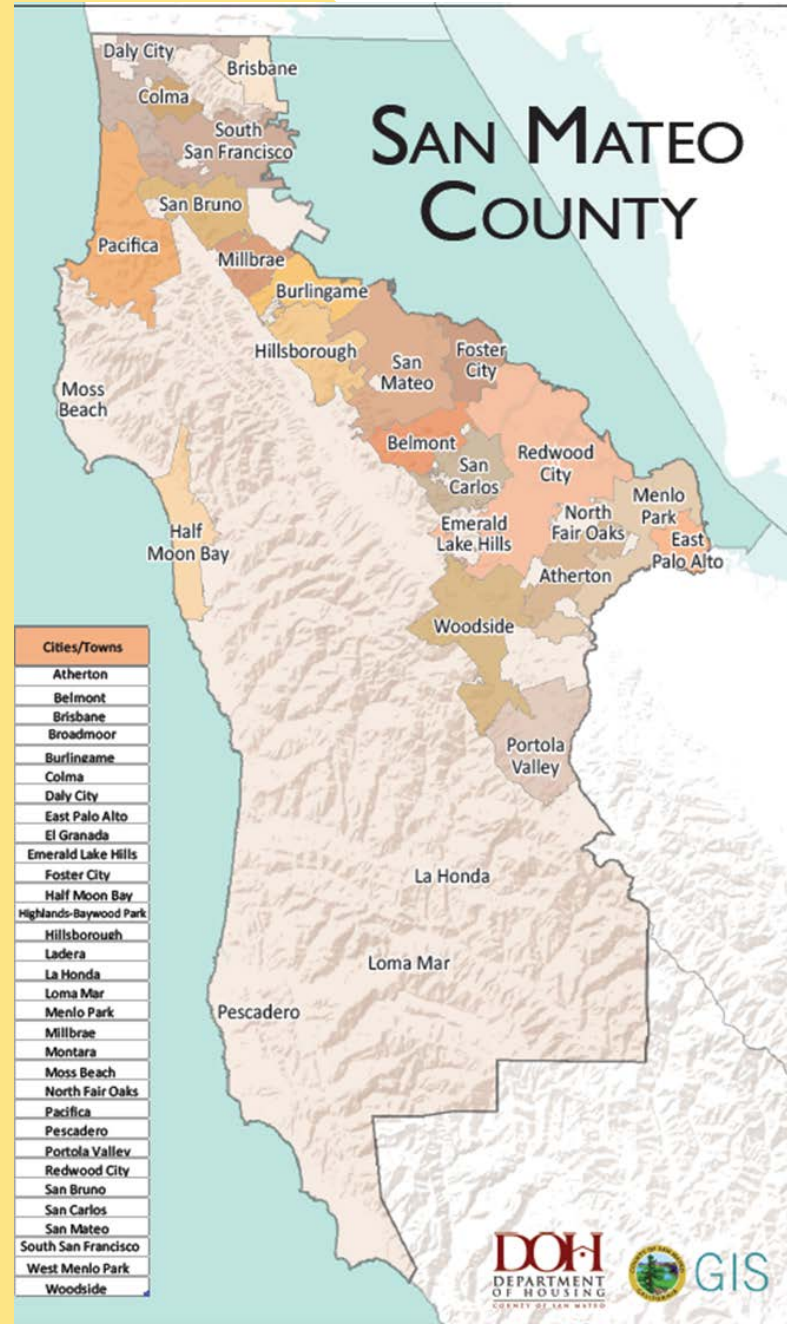


San Mateo County is Aging



Who We Serve

Older adults and individuals living with disabilities.



We provide services to **9,000+** residents

Service Areas



PROTECTION



SUPPORT



ADVOCACY

San Mateo County AAS Hotline

- Access point for all AAS services
- Monday-Friday 8AM-5PM
- 24-hours a day/7 days a week
- Protective and Supportive Services Referrals
- Case Consults
- Clearinghouse for community-based resources



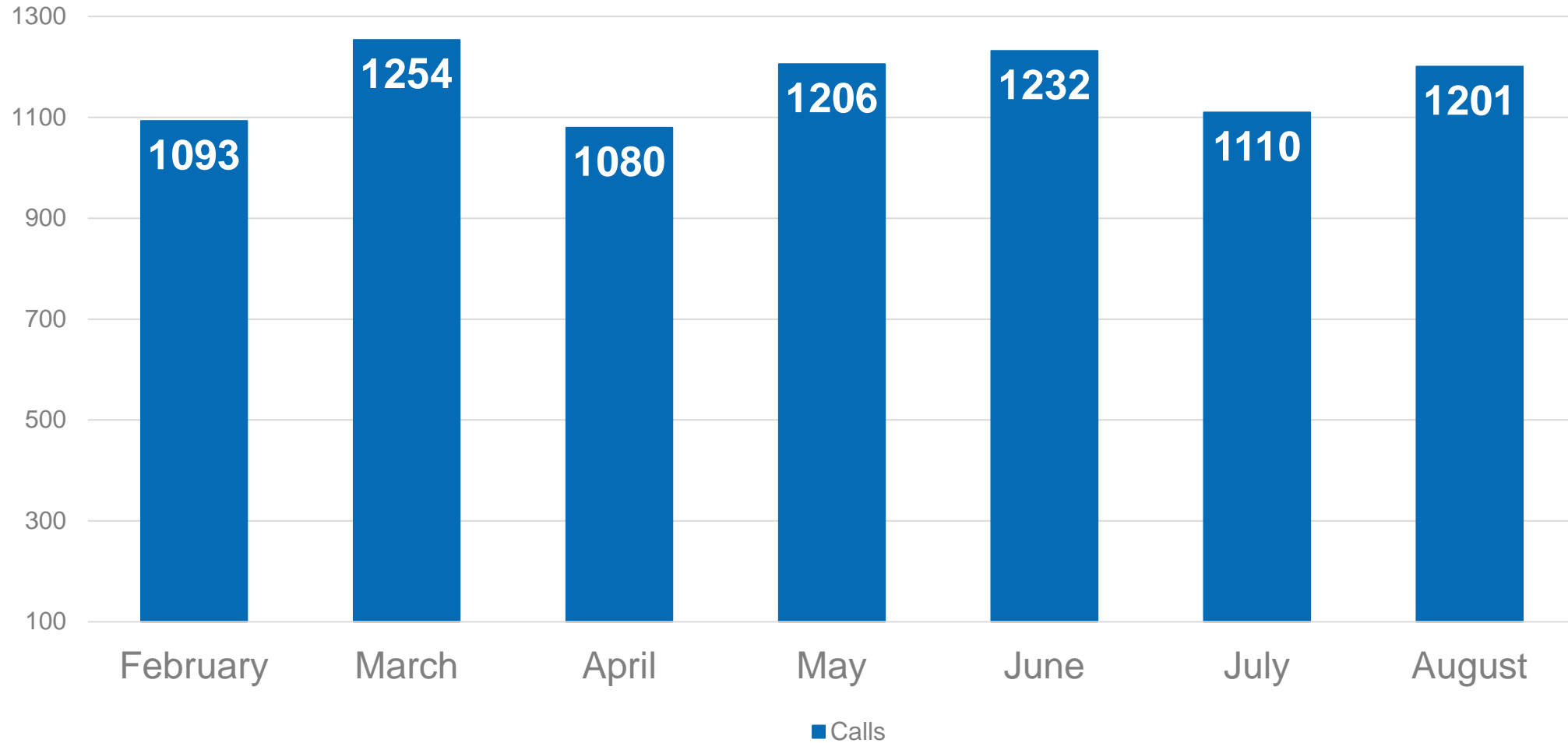


TOP HOTLINE CALLS RECEIVED

- Protective Services (APS/EDAPT)
- In Home Supportive Services
- Conservator-Public Guardian
- Medi-Cal Related
- Housing, Meals, Resources



Hotline Call Volume



Adult Protective Services

As of January 2022: AB135 Bill passed, noting age to be identified as an older adult = 60+

Helps older adults (60 years and older) and dependent adults (18-59 who are disabled), when these adults are unable to meet their own needs, or are victims of abuse, neglect or exploitation.

APS agencies investigate reports of abuse.



Elder & Dependent Adult Protection Team

Multidisciplinary team that includes law enforcement and the District Attorney.

Goals:

1. Streamline and facilitate the investigation and prosecution of alleged abuse against older and dependent adults
2. Coordinate supportive services
3. Raise awareness through targeted outreach to the community and training for potential responders



SAN MATEO COUNTY HEALTH
**AGING & ADULT
SERVICES**



Dependent Adult

- Any adult between the ages of 18 and 59 who resides in CA and who has physical or mental limitations that restricts their ability to carry out normal activities or protect their own rights.
- Includes persons who have physical, developmental disabilities, or whose physical or mental abilities have diminished due to age.

Examples of Elder Abuse

Physical Hitting, kicking, pushing, slapping, burning, or force causing injury	Sexual Engaging in sexual act without consent	Emotional Harming self-worth or emotional well-being, name calling, & scaring
Neglect Failing to meet basic needs like food, housing, clothing, & medical care	Abandonment Leaving elder alone or no longer providing care	Financial Illegally misusing an elder's money, property, or assets

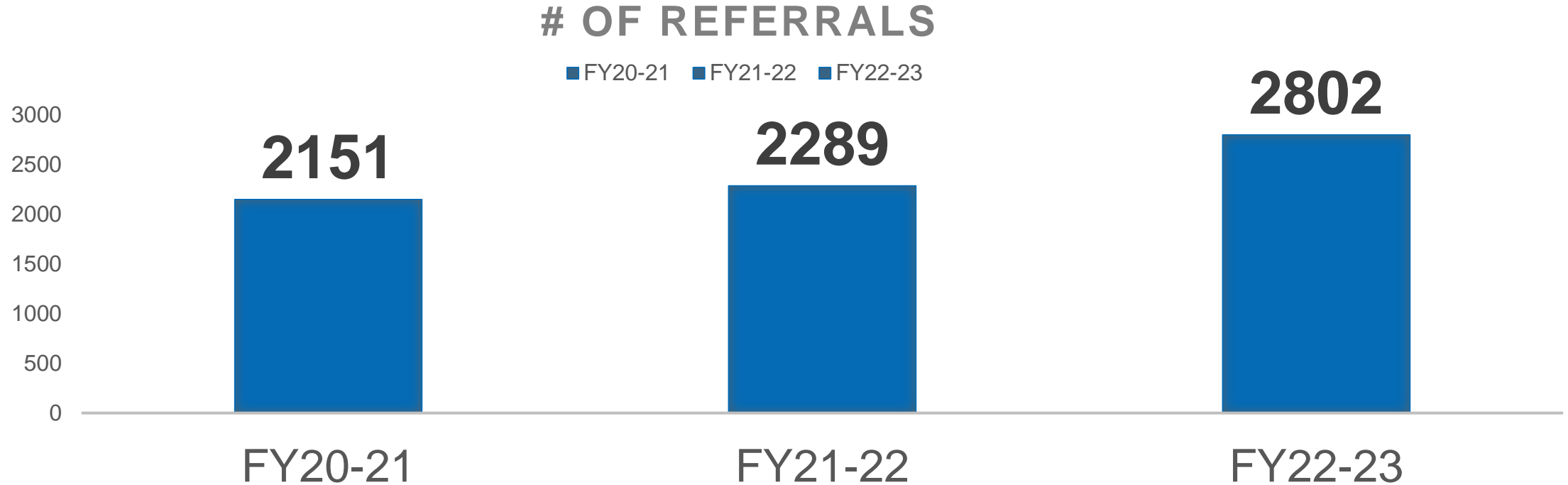
Learn how signs of elder abuse differ from normal aging to prevent elder abuse before it happens.



Types of Abuse



San Mateo County APS/EDAPT Referrals



FY20-21 to FY21-22 there was a **6% increase**

FY21-22 to FY22-23 there was a **22% increase**

80-year-old female, who resided in her home alone.

History with APS with three referrals received. All for alleged self-neglect.

APS social worker scheduled a joint home visit with code enforcement and the client.

Case conference-San Mateo code enforcement, APS social worker, APS supervisor, client and client's daughter.

Case Scenario #1



Case Scenario #2

65-year-old female, who resided in a trailer park.

History of referrals. First APS referral: 2020.

Three more referrals made for alleged self neglect.

APS social worker was able to place the client in temporary housing for a period time. Client returned home.



It is important to remember that you do not have to KNOW the abuse occurred, you just need to have a suspicion that abuse may have occurred.

“If you See Something Say Something”

True North with an Equity Lens



SAN MATEO COUNTY HEALTH
AGING & ADULT
SERVICES

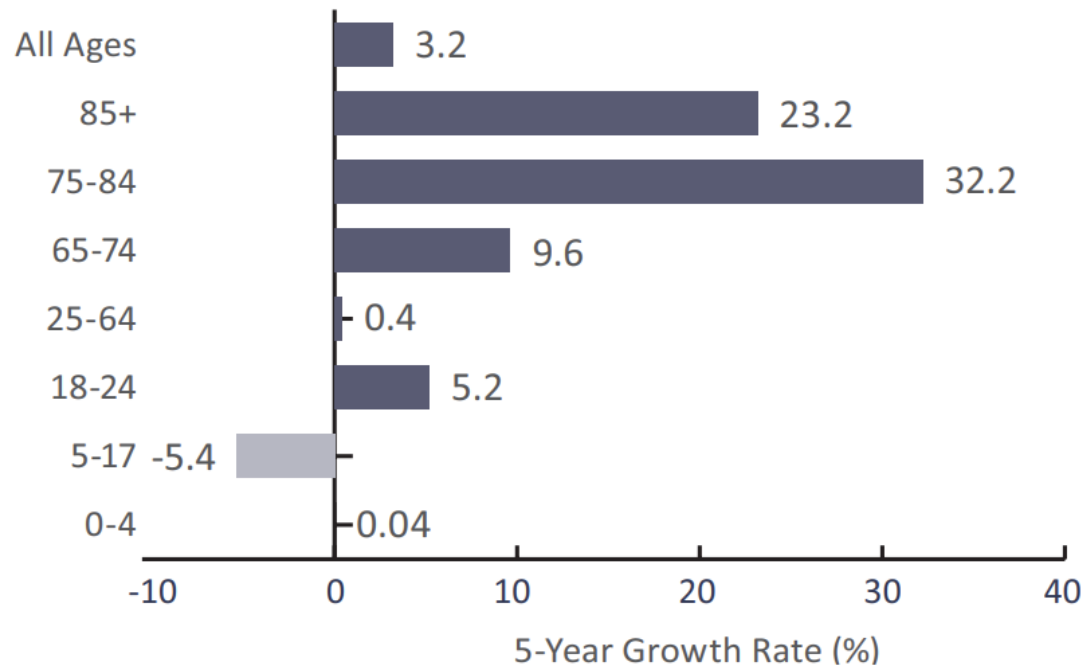
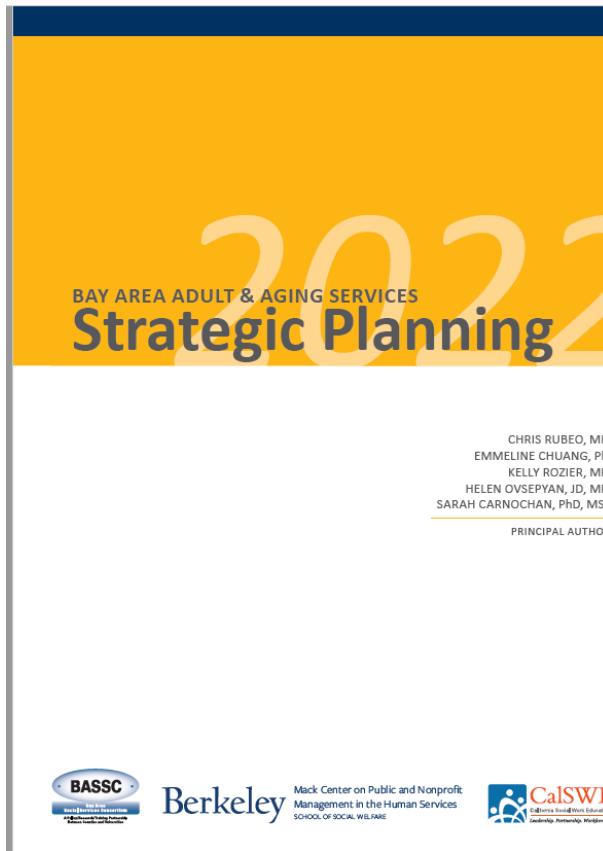
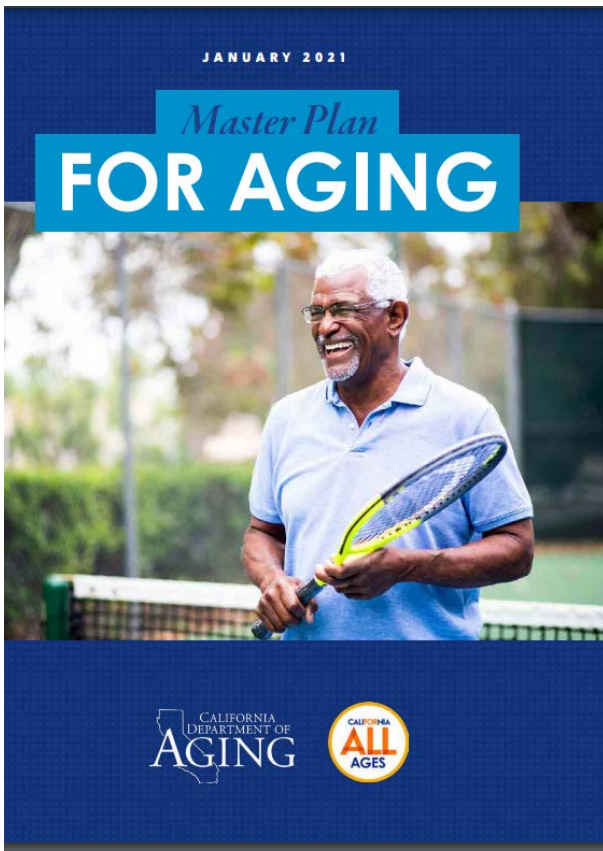


Figure 1 | Bay Area 2022-2027 population growth rate by age group

Source: California Department of Finance. Demographic Research Unit. Report P-3: Population Projections, California, 2010-2060 (Baseline 2019 Population Projections; Vintage 2020 Release). Sacramento: California. July 2021.

Bay Area Adult & Aging Services: Strategic Planning 2022

5 year
growth
rate



Strategic Alignment

COUNTY OF **SAN MATEO**



SAN MATEO COUNTY HEALTH
**AGING & ADULT
SERVICES**

<https://www.smchealth.org/services-aging-and-adult>

1-844-868-0938