

# 2003 Annual Statistics

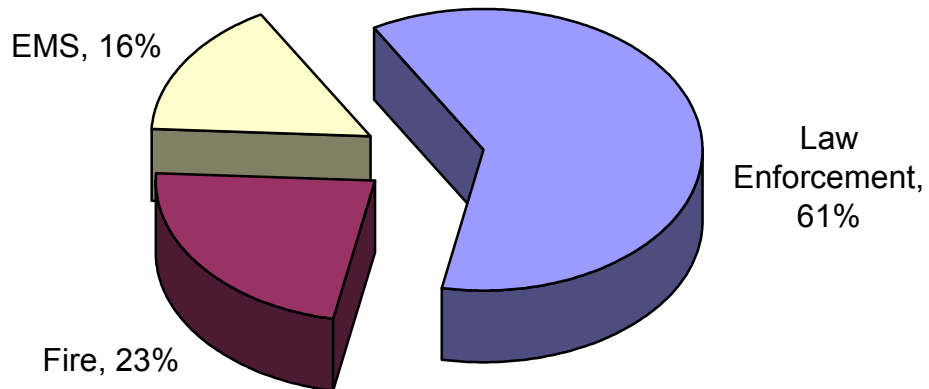
## General Center Statistics:

Total Messages Processed		
System	Input	Output
CAD	24,776,369	103,819,520
DBS	50,200,165	23,377,164
MSS	28,575,091	31,105,698
<b>Total</b>	<b>103,551,625</b>	<b>158,302,382</b>

CAD Statistics	
System	Total
MST Button Pushes	737,519
Sunpro/FireHouse Messages	36,098
Alpha Paging Messages	1,682,223
Web Paging Messages	72,560
Palm VII Messages	17,439
CAD Faxes	12,051
CAD Email Messages	27,620
Zetron 25 Alerts	141,090
Zetron 26 Messages	3,247,958
ProQA Messages	12,5276
CAD System Messages	261,854,007
CAD Availability	99.92%



## Breakdown by Class



# 2003 Annual Statistics

## Incoming Telephone Statistics

<u>Month</u>	<u>Number of Calls Fire/EMS Dispatchers</u>	<u>Number of Calls Law Dispatchers</u>	<u>Total Calls</u>
January	16,748	16,225	32,973
February	16,133	13,737	29,870
March	17,283	15,039	32,322
April	16,082	16,007	32,089
May	17,255	16,319	33,574
June	15,707	19,535	35,242
July	18,053	17,328	35,381
August	16,514	18,081	34,595
September	17,044	16,814	33,858
October	17,895	17,574	35,469
November	15,766	15,505	31,271
December	18,495	13,634	32,129
<b>Totals</b>	<b>202,975</b>	<b>195,798</b>	<b>398,773</b>

### 911 Calls Received:

Law Enforcement: 28,011

Fire: 4,873

EMS: 23,365

# 2003 Annual Statistics

## Number of Incidents by Jurisdiction

Agency	Jan	Feb	Mar	Apr	May	Jun	Jul	Aug	Sep	Oct	Nov	Dec	Totals
DPW	439	382	377	414	576	591	609	594	545	587	415	300	5,829
EMS	3,313	3,046	3,287	3,184	3,330	3,271	3,095	3,169	3,307	3,402	3,246	3,668	39,318
Subtotal	3,752	3,428	3,664	3,598	3,906	3,862	3,704	3,763	3,852	3,989	3,661	3,968	45,147
BIF	47	42	55	51	68	49	69	51	57	59	70	50	668
BRF	269	204	257	243	263	272	300	268	278	287	295	327	3,263
CDF	41	39	47	41	38	66	63	57	51	50	43	46	582
CLF	65	47	58	61	65	69	52	51	48	58	36	60	670
COF	76	69	68	93	75	71	75	80	67	96	83	102	955
DCF	547	445	464	483	501	469	441	461	427	509	521	589	5,857
FCF	173	165	164	181	213	214	151	161	181	194	143	199	2,139
FMA	153	141	142	149	205	137	153	135	148	161	136	140	1,800
HIF	61	67	65	72	85	87	92	72	102	82	83	82	950
HMF	165	184	138	170	162	186	213	168	181	222	162	191	2,142
MLF	185	137	157	156	122	187	137	158	137	190	183	217	1,966
MNF	696	680	770	674	736	766	724	756	748	716	691	723	8,680
PIF	188	201	211	187	206	175	200	198	228	212	231	247	2,484
RCF	543	543	541	555	577	594	625	551	643	656	562	627	7,017
SBF	252	219	252	235	266	249	267	227	262	264	288	286	3,067
SCF	354	351	352	333	351	398	401	342	323	414	418	403	4,440
SMF	654	607	675	686	661	659	668	627	682	683	679	743	8,024
WOF	136	96	107	110	117	132	142	153	110	107	118	133	1,461
Subtotal	4,605	4,237	4,523	4,480	4,711	4,780	4,773	4,516	4,673	4,960	4,742	5,165	56,165
BRD	578	452	586	583	618	595	586	580	615	665	717	575	7,150
BRS	1,067	802	884	855	947	937	1,129	1,050	1,020	1,080	1,122	1,076	11,969
EPA	3,759	3,264	3,830	3,330	4,049	4,151	3,843	3,679	3,680	3,561	3,247	3,163	43,556
HMB	1,129	1,069	1,059	1,011	1,045	1,101	1,147	1,144	1,225	1,297	977	1,103	13,307
LMA	1,452	1,121	1,308	1,141	1,081	1,022	987	892	916	961	847	884	12,612
SOS	4,866	4,462	4,708	4,668	5,095	4,992	5,561	5,574	5,484	5,176	4,372	4,587	59,545
SPL	73	135	14	8	481	63	82	127	384	386		1,533	3,286
Subtotal	12,924	11,305	12,389	11,596	13,316	12,861	13,335	13,046	13,324	13,126	11,282	12,921	151,425
Totals	21,281	18,970	20,576	19,674	21,933	21,503	21,812	21,325	21,849	22,075	19,685	22,054	252,737

# 2003 Annual Statistics

## EMS Specific Statistics:

Number of Hospitals Transports	
Peninsula	5,273
Stanford	3,360
Seton	2,761
Kaiser Redwood City	2,711
San Mateo County General	2,674
Kaiser South City	2,515
Sequoia	2,098
Mills	408
San Francisco General	318
VA Palo Alto	266
Seton Coastside	72
Out of County	61
<b>Total</b>	<b>22,517</b>

Number of Helicopter Dispatches	
LifeFlight	36
Calstar	9

EMD Pre-Arrival Statistics:	
Sequence	Count
Airway / Arrest - Infant	34
Airway / Arrest - Child	73
Airway / Arrest - Adult	1,775
Chocking - Infant	55
Chocking - Adult	113
Childbirth	34
Tracheotomy Airway / Arrest	2
AED Support	1
<b>Total sequences provided</b>	<b>2,087</b>

# 2003 Annual Statistics

24 Hour Unit Responses	
Unit	Total Runs
110	3,624
301	2,893
107	2,110
403	1,425
440	1,077

VSU Responses	
Unit	Total Runs
263	1,231
265	1,222
264	1,166
261	1,097
262	1,090
160	1,089
169	963
370	960
368	942
367	926
285	890
108	869
282	865
283	859
284	859
111	844
281	837
166	741
187	696
186	629

Chute Times	
Unit	Avg. Time
166	00:40
187	00:43
370	00:44
111	00:45
261	00:46
266	00:46
281	00:46
160	00:47
263	00:47
368	00:47
169	00:48
264	00:48
285	00:48
108	00:49
265	00:50
282	00:50
367	00:50
186	00:51
262	00:52
283	00:52
284	00:58
301	00:59
441	00:59
110	01:03
365	01:03
403	01:04
107	01:05
440	01:11



# 2003 Annual Statistics

## Fire Specific Statistics:

Battalion Chief Responses	
Unit	Total Runs
BC3	780
BC1	586
BC4	454
BC6	429
BC16	314
BC20	297
BC21	268
BC2	265
BC10	250
BC5	241
BC19	169
BC9	169
BC7	106
BC8	106
BC11	82
BC3D	50
BC17	47
BC15	42

Truck Responses	
Unit	Total Runs
T9	975
T28	585
T34	541
T21	494
T1	484
T95	482
T13	462
T51	455
T85	123
Q62	54
Q65	27
Q40	10

Fire Buffs Responses	
Unit	Total Runs
SUP20	33
SUP61	13
SUP14	8
SUP23	4
SUP9	3

Fire Chief Responses	
Unit	Total Runs
CH10	19
CH6A	16
CH4	11
CH5A	11

Miscellaneous Units	
Unit	Total Runs
AB1	3
BS17	22
BS61	16
BS9	17
CalStar	9
HM13	19
Life Flight	36
R1	9
RS7	128
WT8	15

IDT Units	
Unit	Total Runs
IDT47	17
IDT32	14
IDT59	12
IDT61	8
IDT62	7
IDT2	5
IDT2	2
IDT57	1

# 2003 Annual Statistics

Engine Response	
Unit	Total Runs
E2	2,142
E10	1,827
E92	1,626
E9	1,586
E51	1,550
E37	1,534
E24	1,464
E21	1,389
E23	1,351
E26	1,336
E14	1,287
E1	1,264
E91	1,227
E95	1,199
E72	1,170
E94	1,147
E11	1,114
E40	1,078
E71	1,078
E6	1,064
E13	1,057
E15	1,003
E52	991
E34	981
E77	963
E4	939
E25	867
E29	855
E36	810
E28	771
E5	737
E16	709
E3	703
E12	652
E35	611
E41	597
E85	581
E81	580
E32	573
E20	567
E38	529

Engine Response	
Unit	Total Runs
E93	481
E8	470
E33	454
E7	440
E27	432
E44	422
E18	407
E31	385
E217	279
E19	253
E17	239

Fire Inspector Responses	
Unit	Total Runs
F13A	46
F15D	37
F18	31
F13B	29
F14	28
F13C	25
F14A	25
F15B	18
F116	17
F11C	17
F15A	17
F16	17
F15E	15



# 2003 Annual Statistics

Responses by District	
District	Count
FS02	2,414
FS10	1,798
FS09	1,747
FS92	1,717
FS37	1,697
FS51	1,691
FS24	1,469
FS23	1,463
FS26	1,401
FS21	1,348
FS01	1,258
FS14	1,214
FS40	1,184
FS13	1,134
FS91	1,072
FS06	1,058
FS72	1,055
FS95	1,055
FS15	1,030
FS94	998
FS34	937
FS52	928
FS29	915
FS04	893
FS11	851
FS28	744
FS25	686
FS36	668
FS85	634
FS05	624
FS77	599
FS35	596
FS07	585
FS71	569
FS31	564
FS03	550
FS08	547
FS16	531
FS32	528

Responses by District	
District	Count
FS81	527
FS74	524
FS20	522
FS12	469
FS93	460
FS41	458
FS18	414
FS44	383
FS27	382
FS33	368
FS58	351
FS38	332
FS17	305

Worst Chute Times	
Unit	Avg. Time
T85	2:51
E85	2:37
E87	2:36
Q65	2:33
E61	2:28
E86	2:24
Q62	2:19
E63	2:07
E64	2:03
T51	1:58
E93	1:52
T1	1:43
T21	1:43
E17	1:42
E4	1:42
T13	1:42
E18	1:41
T28	1:41
T9	1:41
E27	1:40
E77	1:40

*Average County-wide chute time is 1:26*



# 2003 Annual Statistics

Most Runs after 2200 hrs	
Unit	Total Dispatches
E2	460
E92	391
E37	372
E10	368
E51	330
E26	282
E24	281
E9	271
E95	268
E1	265
E14	263
E72	247
E91	241
E21	240
E94	235
E71	226
E11	225
E52	220
E23	219
E77	213
E13	212
E4	199
E6	189
E15	187
E5	181
E34	179
T9	178
E36	175
T1	166
E40	158
E3	143
E29	141
E85	135
E28	134
E16	121
E25	121
E35	119
E93	118
T95	115
E81	113

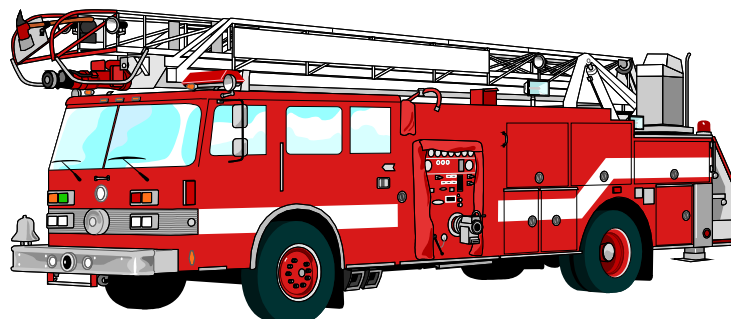
Best Chute Times	
Unit	Avg. Time
E81	1:06
E40	1:07
E31	1:10
E44	1:10
E41	1:11
E32	1:13
E10	1:14
E33	1:17
E9	1:17
E94	1:17
E11	1:18
E91	1:18
E92	1:18
E29	1:19
E8	1:19
E37	1:21
E95	1:21
E23	1:22
E34	1:22
E72	1:23
E38	1:24
E71	1:24
E15	1:25
E6	1:25
E12	1:27
E21	1:27
T95	1:27
E19	1:29
E24	1:29
E36	1:29
E28	1:30
E1	1:31
E20	1:31
E25	1:31
E26	1:31
E35	1:31
E3	1:32
E52	1:32
E2	1:33

*Average County-wide chute time is 1:26*

# 2003 Annual Statistics

## Number of Incidents By Alarm Level By Group

GROUP	1st	2nd	3rd	4th	5th	6th	7th	8th	9th	Total
BIF	664	1								665
BRF	3,250	5								3,255
CDF	579				1					580
CLF	669	2								671
COF	958	1	2							961
DCF	5,800	4	1							5,805
FCF	2,137	2	1							2,140
HIF	949		3			1				953
HMF	2,129	3		1		1				2,134
IAF	75									75
MLF	1,959	2								1,961
MNF	8,660	2	2							8,664
PAF	6									6
PIF	2,472	5								2,477
RCF	6,985	7	1	1						6,994
SBF	3,042	3	1							3,046
SCF	4,432	4	1	1		1				4,439
SFF	1									1
SMF	7,999	9	2							8,010
SOF	105	5			1					111
UNK	1,772	1		1						1,774
WOF	1,440	2	2							1,444
<b>TOTAL</b>	<b>56,083</b>	<b>58</b>	<b>16</b>	<b>4</b>	<b>2</b>	<b>3</b>				<b>56,166</b>



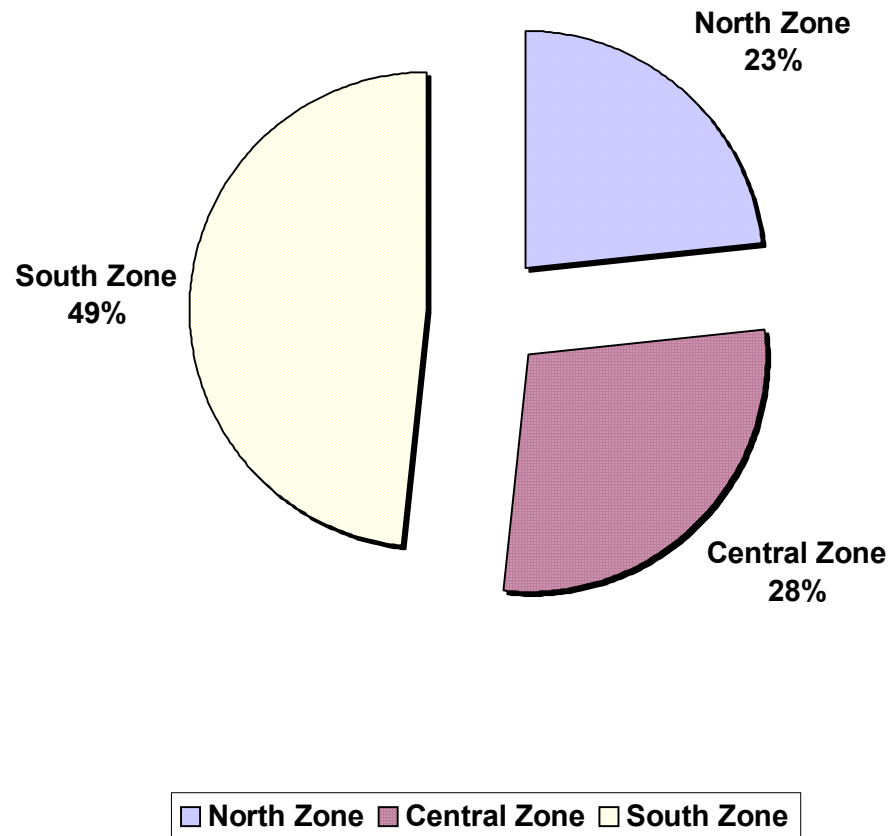
# 2003 Annual Statistics

## Number of Incidents by Fire Jurisdiction

Agency	Jan	Feb	Mar	Apr	May	Jun	Jul	Aug	Sep	Oct	Nov	Dec	Totals
BIF	47	42	55	51	68	49	69	51	57	59	70	50	668
BRF	269	204	257	243	263	272	300	268	278	287	295	327	3,263
CDF	41	39	47	41	38	66	63	57	51	50	43	46	582
CLF	65	47	58	61	65	69	52	51	48	58	36	60	670
COF	76	69	68	93	75	71	75	80	67	96	83	102	955
DCF	547	445	464	483	501	469	441	461	427	509	521	589	5,857
FCF	173	165	164	181	213	214	151	161	181	194	143	199	2,139
FMA	153	141	142	149	205	137	153	135	148	161	136	140	1,800
HIF	61	67	65	72	85	87	92	72	102	82	83	82	950
HMF	165	184	138	170	162	186	213	168	181	222	162	191	2,142
MLF	185	137	157	156	122	187	137	158	137	190	183	217	1,966
MNF	696	680	770	674	736	766	724	756	748	716	691	723	8,680
PIF	188	201	211	187	206	175	200	198	228	212	231	247	2,484
RCF	543	543	541	555	577	594	625	551	643	656	562	627	7,017
SBF	252	219	252	235	266	249	267	227	262	264	288	286	3,067
SCF	354	351	352	333	351	398	401	342	323	414	418	403	4,440
SMF	654	607	675	686	661	659	668	627	682	683	679	743	8,024
WOF	136	96	107	110	117	132	142	153	110	107	118	133	1,461
<b>Total</b>	<b>4,605</b>	<b>4,237</b>	<b>4,523</b>	<b>4,480</b>	<b>4,711</b>	<b>4,780</b>	<b>4,773</b>	<b>4,516</b>	<b>4,673</b>	<b>4,960</b>	<b>4,742</b>	<b>5,165</b>	<b>56,165</b>

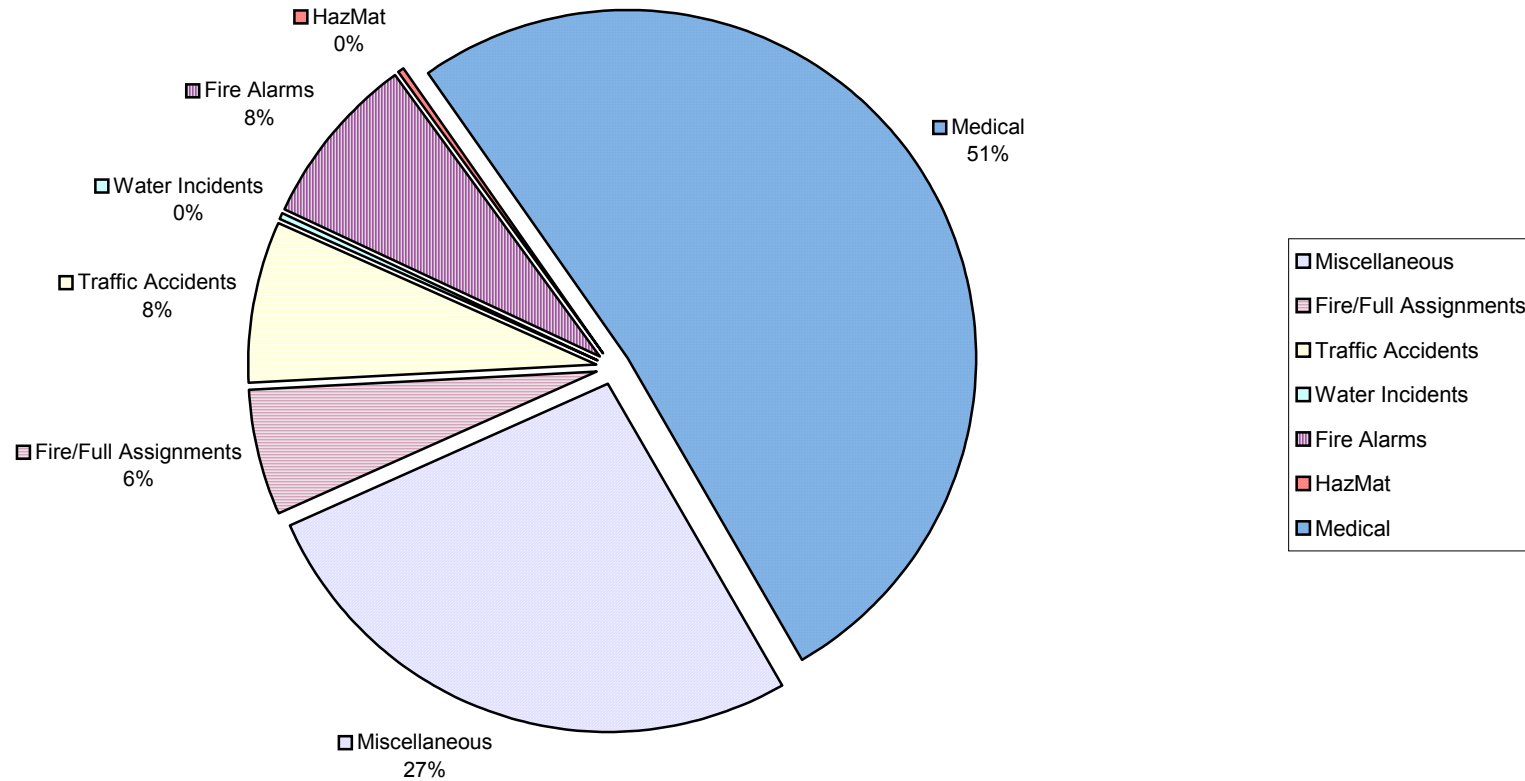
# 2003 Annual Statistics

## Fire Incidents by Zone for Year 2003



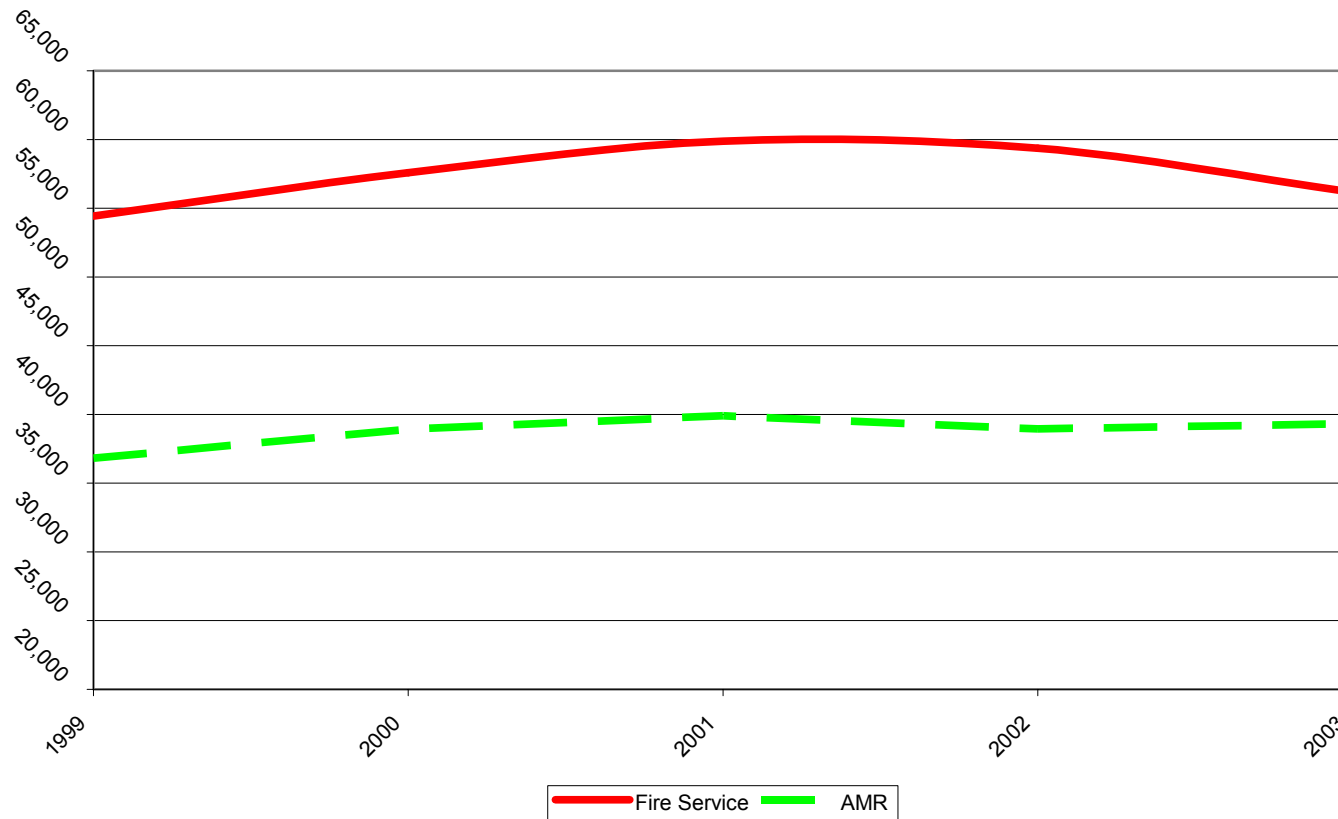
# 2003 Annual Statistics

## Incident Type Breakdown



# 2003 Annual Statistics

## Call Volume Comparison



# 2003 Annual Statistics

## Law Enforcement Specific Statistics:

Number of CLETS/AWS Inquiries by agency:	
Agency	Count
Broadmoor Police:	12,948
Brisbane Police:	18,082
East Palo Alto Police:	56,869
Half Moon Bay Police:	13,321
Law Mutual Aid:	32,408
Sheriff's Office:	81,356
Special:	4,129
<b>Total</b>	<b>219,113</b>



CLETS SVS Statistics by Agency for 2003											
Agency	Felony Vehicle	Found Evidence Plate	Impound Vehicle	Lost Vehicle	Missing Person Vehicle	Lost Stolen Plate	Repo Vehicle	Stolen Vehicle	Towed Stored Vehicle	Two Stolen Plates	Total
Brisbane	0	2	3	0	0	8	15	19	204	0	251
Broadmoor	0	0	0	0	0	0	3	4	8	0	15
East Palo Alto	0	21	416	0	0	123	178	280	1451	0	2,469
Half Moon Bay	0	1	13	0	0	5	25	9	149	0	202
Sheriff's Office	1	15	280	1	0	57	126	282	1116	0	1,878
<b>Totals</b>	<b>1</b>	<b>39</b>	<b>712</b>	<b>1</b>	<b>0</b>	<b>193</b>	<b>347</b>	<b>594</b>	<b>2,928</b>	<b>0</b>	<b>4,815</b>

**Total SVS Entries for year 2003: 4,815**

# 2003 Annual Statistics

Sheriff Beat Activity	
Beat	Total
10	1,019
11	14,345
20	7,588
31	5,011
32	2,715
40	1,521
60	2,573
70	9,500
80	4,090
Other	11,183
<b>Total</b>	<b>59,545</b>

Activity Breakdown by Source of Incident		
Agency	Citizen	Field
Sheriff's Office	59%	41%
East Palo Alto Police	59%	41%
Half Moon Bay Police	59%	41%
Broadmoor Police	38%	62%
Brisbane Police	42%	58%

East Palo Alto Beat Activity	
Beat	Total
1	15,140
2	7,272
3	12,531
4	5,829
Other	2,784
<b>Total</b>	<b>43,556</b>

Half Moon Bay Beat Activity	
Beat	Total
1	7,465
2	4,775
Other	1,067
<b>Total</b>	<b>13,307</b>

Brisbane Police Beat Activity	
Beat	Total
1	8,374
Other	3,595
<b>Total</b>	<b>11,969</b>

Broadmoor Police Activity	
Beat	Total
1	2,831
2	1,042
Other	3,277
<b>Total</b>	<b>7,150</b>





# 2003 Annual Statistics

## On Call Statistics:

Agency	Number of Calls
ISD Radio Shop	209
Coroners Office	102
Probation	2,795
D.A.'s Office	231
Environmental Health	70
Judges	686
County Parks	98
County Road Department	133
County Sewer Department	320
County Water Department	80
Palo Alto Municipal Water	10
Coastside County Water	61
NTF	122
VTTF	43
Sheriff O.E.S.	122
Sheriff's Office Bomb Unit	62
Sheriff's Office EPA Detectives	49
Sheriff's Office Crime Lab	75
Sheriff's Office Major Crimes Unit	37

