

PROPERTY OWNERS MEETING SEWER SERVICE RATES

**Crystal Springs County Sanitation District
(District)**

April 22, 2021

6:30 PM

Via Zoom

Department of Public Works



ZOOM MEETING **GENERAL HOUSEKEEPING**

For those attending the meeting on the Zoom videoconference, during the public comment or question period, we will use the “raise hand” feature in order to organize any public comments or questions.

You may click the “raise hand” feature to raise your hand to speak. When you hear your name called, you will receive a request to unmute your microphone and you may begin speaking.

For those joining by phone, please press *9 to raise your hand, and press *6 to toggle mute/unmute.

DEPARTMENT OF PUBLIC WORKS
STAFF IN ATTENDANCE TONIGHT

Jim Porter, Director

**Ann M. Stillman, Deputy Director, Engineering and Resource
Protection**

**Mark Chow, Principal Civil Engineer, Utilities-Flood Control-
Watershed Protection**

**Julie Young, Senior Civil Engineer, Utilities-Flood Control-
Watershed Protection**

**Anna Mui, Associate Engineer, Utilities-Flood Control-
Watershed Protection**



CRYSTAL SPRINGS COUNTY SANITATION DISTRICT

**Information on Proposed Sewer Service Rate Increase for
Fiscal Years 2021-22 through 2023-24**

**To be Considered by the County of San Mateo Board of
Supervisors during a Public Hearing on:**

Tuesday, July 20, 2021 at 9:00 a.m.

by Videoconference Only

Visit

<https://bos.smcgov.org/board-supervisors-agenda-information>

For

**Meeting Agenda and details for how to participate in the
meeting**

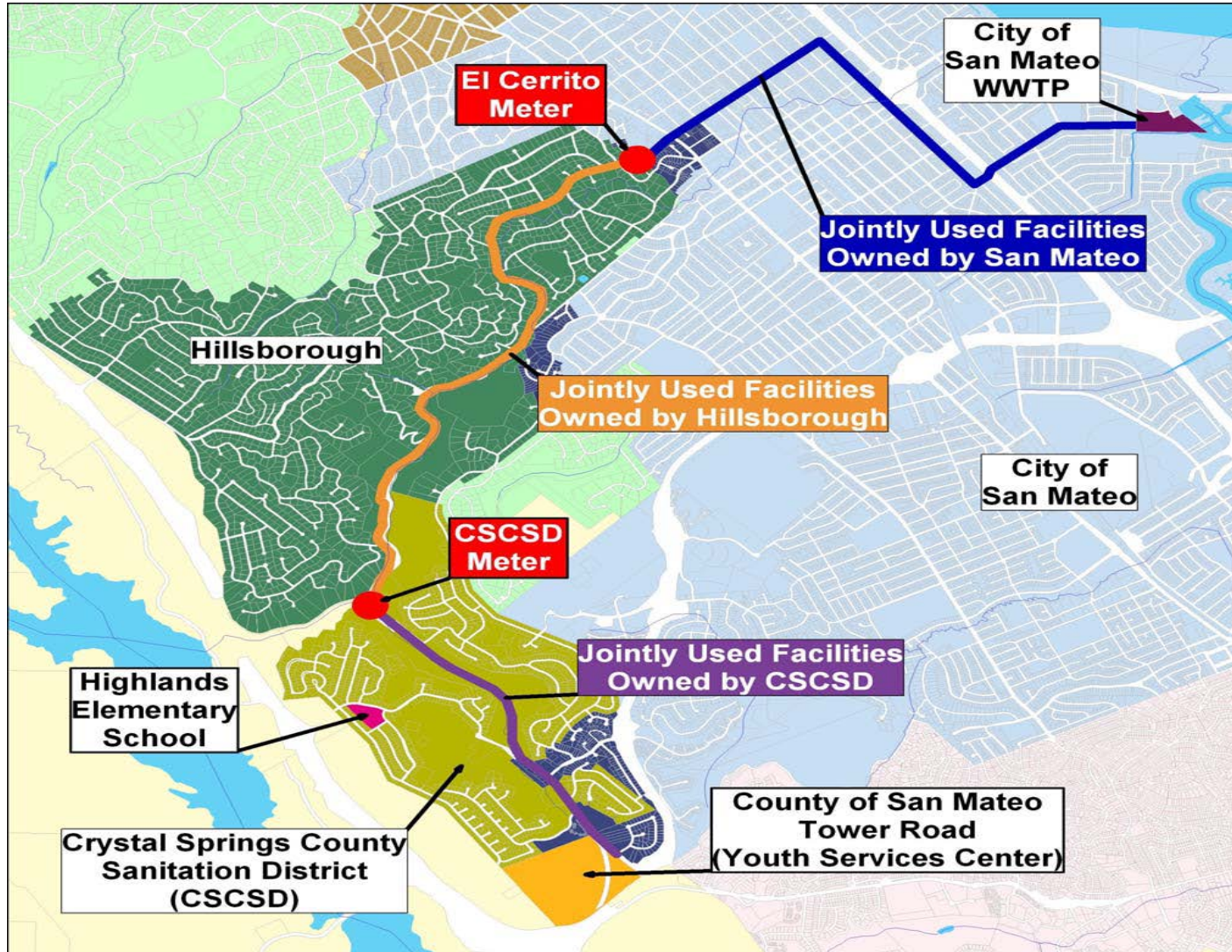


AGENDA

- ***District Information***
- ***District Funding***
- ***Elements of the Sewer Service Rates***
 - ***Out of District Costs***
 - ***Clean Water Program (CWP), etc.***
 - ***In District Costs***
- ***Proposed Rates for Consideration***
- ***Rate Setting Timeline***
- ***Fiscal Year Actual and Projected Revenue Requirements***
- ***Questions, Comments, and Input***

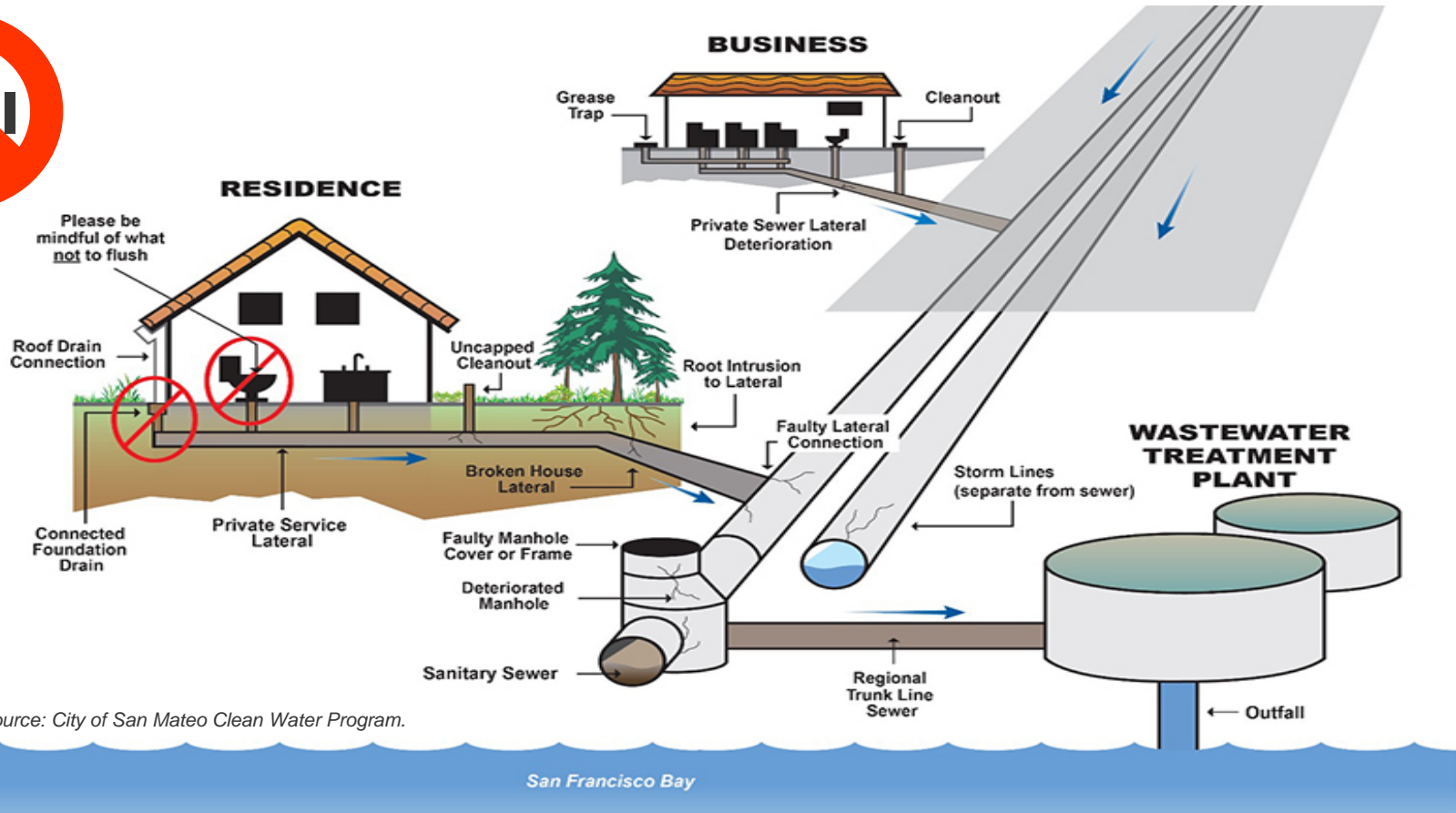
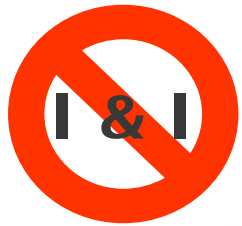
DISTRICT INFORMATION

SEWAGE FLOWS THROUGH TOWN OF HILLSBOROUGH AND CITY OF SAN MATEO TO THE CITY'S SEWAGE TREATMENT PLANT AT 2050 DETROIT DRIVE FOR TREATMENT



DISTRICT INFORMATION – HOW DOES A SEWER SYSTEM WORK?

DISTRICT RELIES ON DOWNSTREAM AGENCIES TO TRANSPORT SEWAGE COLLECTED BY THE DISTRICT TO THE TREATMENT PLANT



DISTRICT SPECIFIC STATISTICS

District	Age (yrs) *	Number of Connections **	Equivalent Residential Units **	Downstream Transport Agencies	Treatment Facility
Crystal Springs County Sanitation District (CSCSD)	74	1,434	1,535	Town of Hillsborough & City of San Mateo	City of San Mateo

**Age based on District formation date*

*** Based on 2020-21 Sewer Service Charge Report*

District	Miles of Pipe (Feet)	Percentage in Easements	Percentage in Streets
Crystal Springs County Sanitation District (CSCSD)	18 mi (95,100 ft)	15%	85%

SEWER/SANITATION DISTRICTS IN COUNTY GOVERNMENT

DISTRICT IS AN INDEPENDENT ENTITY WITH ITS OWN SEPARATE BUDGET

- The District's Governing Board is the Board of Supervisors
- The District receives Sewer Service Charges and limited property taxes within the District boundaries to fund sewer service
- The Sewer Service Charges are a Fee For Service, Not a Tax
- The District collects Sewer Service Charges on the Tax Bill because it is least costly way to collect the fee



ELEMENTS OF THE SEWER SERVICE RATES

OUT OF DISTRICT COSTS:

- ***The Clean Water Program (CWP)***
- ***Sewage Transport and Treatment***
- ***Downstream Agency Capital Improvement Projects***



IN DISTRICT COSTS:

- ***Operation and Maintenance***
- ***Regulation Compliance***
- ***District Projects***



What is the Clean Water Program?

The Clean Water Program is a comprehensive plan to upgrade the wastewater collection system and wastewater treatment plant serving the City of San Mateo, the Town of Hillsborough, the Crystal Springs County Sanitation District and the County of San Mateo to provide reliable service for years to come.

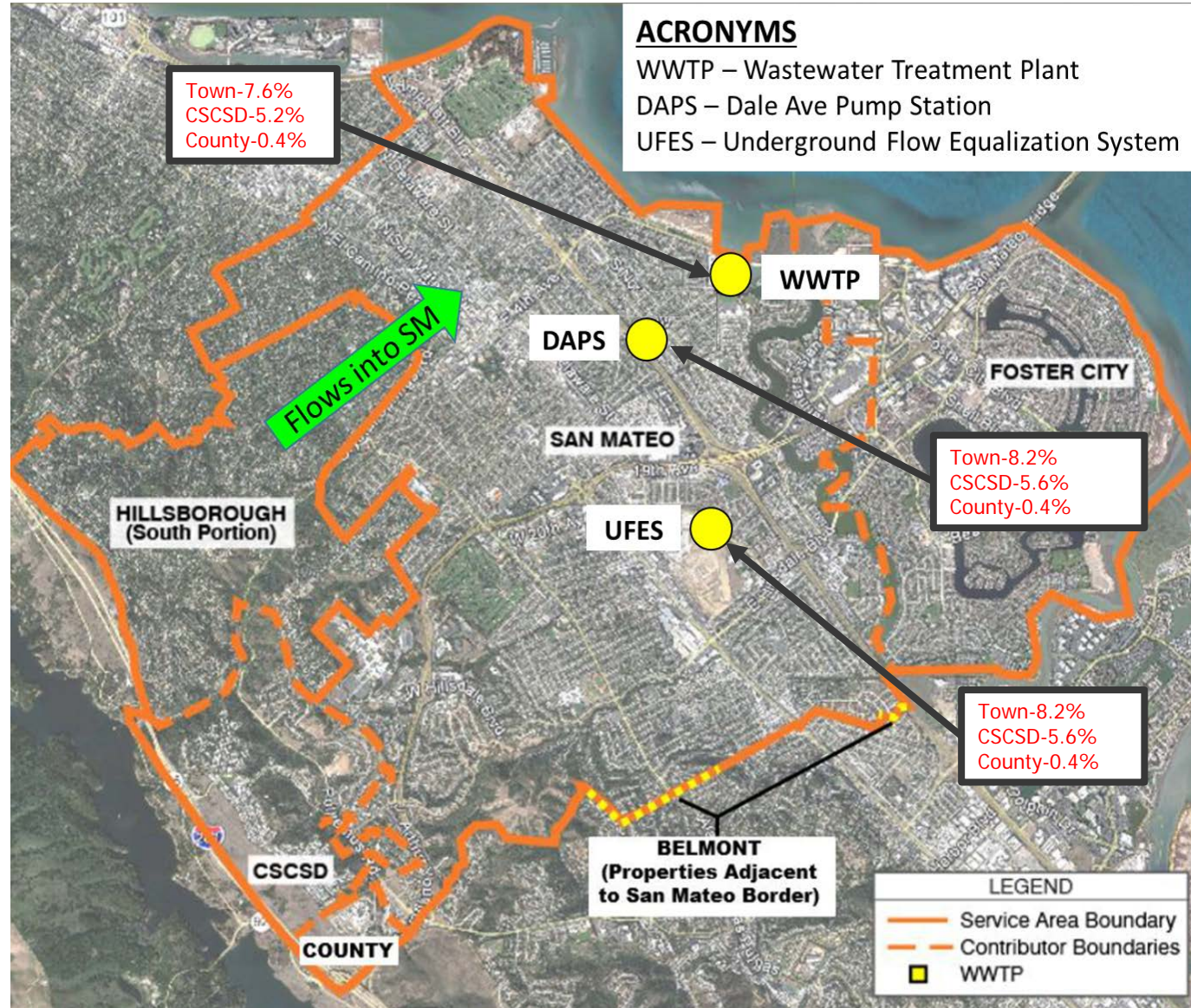
The **\$1 billion initiative** launched in 2015 to modernize the sewer system is a response to a Cease and Desist Order from the State of California mandating a sewer system upgrade to eliminate sewer overflows from entering the San Francisco Bay.

The Clean Water Program is intended to meet the following goals: to replace the aging pipes and facilities that have reached or are nearing their lifespan; to meet current and future regulatory requirements and increase system capacity during heavy rains; and to align with long-term sustainability goals. Improvements to the wastewater treatment plant and sewer collection system will protect public health and the health of San Francisco Bay.

Components of the Clean Water Program

- City of San Mateo receives, conveys and treats wastewater from CSCSD and other regional customers in service area boundary.
- CSCSD's wastewater is conveyed through the Town of Hillsborough and City of San Mateo collection systems and Dale Ave Pump Station to the WWTP
- San Mateo, Foster City, Hillsborough, San Mateo County, and CSCSD each have a financial responsibility for the capital improvements.

Source: City of San Mateo Clean Water Program.



CSCSD Cost Share of the Clean Water Program

PAYING FOR SEWAGE TRANSPORT, TREATMENT, AND DISPOSAL

- ***Downstream Agency Capital Improvement Projects***
 - ***Current estimate of CSCSD's share of costs is estimated to be approximately \$32.6 million or \$1.6 million each year for 30 years with various City financing exclusively for the CWP expenses.***

See <https://cleanwaterprogramsanmateo.org/> for updates about the ***Clean Water Program***



City of San Mateo
Website: [City of San Mateo](https://www.cityofsanmateo.org/)
Mail: Clean Water Program City of San Mateo 330 W. 20th Avenue San Mateo, CA 94403
Telephone: (650) 727-6870
Email: [info@CleanWater ProgramSanMateo.org](mailto:info@CleanWaterProgramSanMateo.org)

ELEMENTS OF THE SEWER SERVICE RATES – OUT OF DISTRICT COSTS

PAYING FOR SEWAGE TRANSPORT, TREATMENT, AND DISPOSAL

- ***Sewage Transport, Treatment, and Disposal***
- ***Downstream Agency Capital Improvement Projects***
 - ***Annual loan payment of \$476,208 to County General Fund for District's share of the Crystal Springs/El Cerrito Sewer Trunk Line projects completed by the Town of Hillsborough and City of San Mateo (\$7.3M loan)***
 - ***We are finalizing the terms with the City of San Mateo and Town of Hillsborough to pay for capital improvement projects at the treatment plant and jointly-used facilities (Clean Water Program or CWP) (\$1.6M per year for 30 years)***



ELEMENTS OF THE SEWER SERVICE RATES – DISTRICT COSTS

- Administration and operation of the District (budgets, customer service, routine maintenance)
- Annual loan payment of \$119,231 to the State Revolving Fund for the completed 1999 Master Plan Capital Improvement Projects (\$1.95M loan) (ongoing until FY 2034-35)
- Sanitary Sewer Overflow (SSO) Response, Reporting, Water Quality Monitoring, and Public Awareness Program
- Provide 24/7 emergency response to clear blockages in private laterals and services during COVID-19 pandemic



ELEMENTS OF THE SEWER SERVICE RATES – DISTRICT COSTS

SANITARY SEWER OVERFLOWS (SSO)

District	2016	2017	2018	2019	2020	2021 (to date)
CSCSD	0	6*	9*	3*	7	0

Primary Causes of SSOs: Roots and Pipe Failure.

*3 (2017), 8 (2018) and 2 (2019) SSO occurrences due to Seneca Lane mudslide site. The permanent repair was completed in 2020.

Preventative maintenance on District sewer mains is being performed at 3 month and 9 month frequencies.



**The toilet is only meant
to flush the three P's—
pee, poop and paper.**
toilet

ELEMENTS OF THE SEWER SERVICE RATES – DISTRICT COSTS

POLLUTION PREVENTION/PUBLIC AWARENESS PROGRAM



For health-related coronavirus updates, go to smchealth.org/coronavirus. Questions about the Shelter in Place Order? Go to our [Shelter in Place FAQs](#). For the latest updates from the County, go to: www.smcgov.org.

Home > Services > Utilities

Sewer Services

"FLUSHABLE" DOES *NOT* MEAN FLUSHABLE



Cleaning wipes, baby wipes, facial wipes, and paper towels are some of the biggest causes of (or contributors to) sewer back-ups in the County of San Mateo Sewer Districts. That's right - even if the package says "flushable" or "disposable", they should NEVER be flushed. They belong in the trash.

Flush only toilet paper, put trash in the trash can. Help prevent costly sewer problems and keep our environment safe from sanitary sewer backups and overflows!

FLUSH ONLY THE "3 P'S":

- Pee
- Poop
- toilet Paper
- No Wipes. No Paper Towels.

To report a sewer backup, call: (650) 363-4100 (24hr/day)

[FIND MORE INFORMATION HERE »](#)

In May 2020 due to COVID-19 shelter-in-place orders and to increase awareness about not flushing cleaning and sanitizing "flushable wipes" the above message was added to the sewer district website: <http://www.smcgov.org/sewers>



ELEMENTS OF THE SEWER SERVICE RATES – DISTRICT COSTS

POLLUTION PREVENTION/PUBLIC AWARENESS PROGRAM

AVOID SEWER BACKUPS AND OVERFLOWS BY KEEPING TRASH OUT OF YOUR TOILET

CLOG

Items shown: Tampons, maxi pads & their applicators/wrappers; Kitty litter; Syringes; Paper towels and shop towels; Cotton swabs & makeup pads; Diapers; Dental Floss; Plastics and food wrappers; Condoms and their wrappers; Hair; Prescription and OTC medications.

Did you know?
Cleaning wipes, baby wipes and facial wipes are one of the biggest causes (or contributors) to sewer back-ups in the County of San Mateo Sewer Districts. That's right- even if the package says "flushable" or "disposable", they should NEVER be flushed. They belong in the trash.

Flush ONLY toilet paper. Put trash in the trash can.
For more information please visit our website at www.smcgov.org/sewers or call us at 650-363-4100.

Be Sewer Savvy:
Notes, tips & tricks to help keep your sewer pipes in tip-top shape.

- ✓ Protect your home
- ✓ Protect your business
- ✓ Avoid costly repairs

And prevent water pollution, too!

Brochures have been distributed to customers during service calls and mailed to customers upstream of a sanitary sewer overflow. Copies are also available on website at <http://www.smcgov.org/sewers>

ELEMENTS OF THE SEWER SERVICE RATES – DISTRICT COSTS

REGULATORY COMPLIANCE CONTINUES:

- ***State Water Resources Control Board***
 - ***Continuous updating of Sewer System Management Plan (SSMP)***
 - ***Reporting to State Office of Emergency Services certain types of SSO's within 2 hours***
 - ***Sampling of water within 48 hours when SSO enters a creek or stream***
 - ***Training maintenance staff on SSO response***
 - ***2009 Cease and Desist Order (CDO) - Annual Reports due May 15th:***
 - a) ***Sewer System Cleaning and Root Control Program***
 - b) ***Infrastructure Renewal***
 - c) ***Progress of Short and Long Term Improvements***
 - d) ***Reporting required until City of San Mateo CDO is dismissed which is anticipated after the City completes its Clean Water Program projects***



ELEMENTS OF THE SEWER SERVICE RATES – DISTRICT COSTS

HIGH PRIORITY CAPITAL IMPROVEMENT PROJECTS (CIP) IDENTIFIED THROUGH CONDITION ASSESSMENTS

- ***Improvements are recommended based on the following:***
 - ❖ ***Lack of capacity in pipe***
 - ❖ ***Excessive maintenance costs***
 - ❖ ***Structural defects in pipe***

- ***Portions of your Sewer Service Charges collected are used to pay for system improvements.***



RECOMMENDED CAPITAL IMPROVEMENT PROJECTS

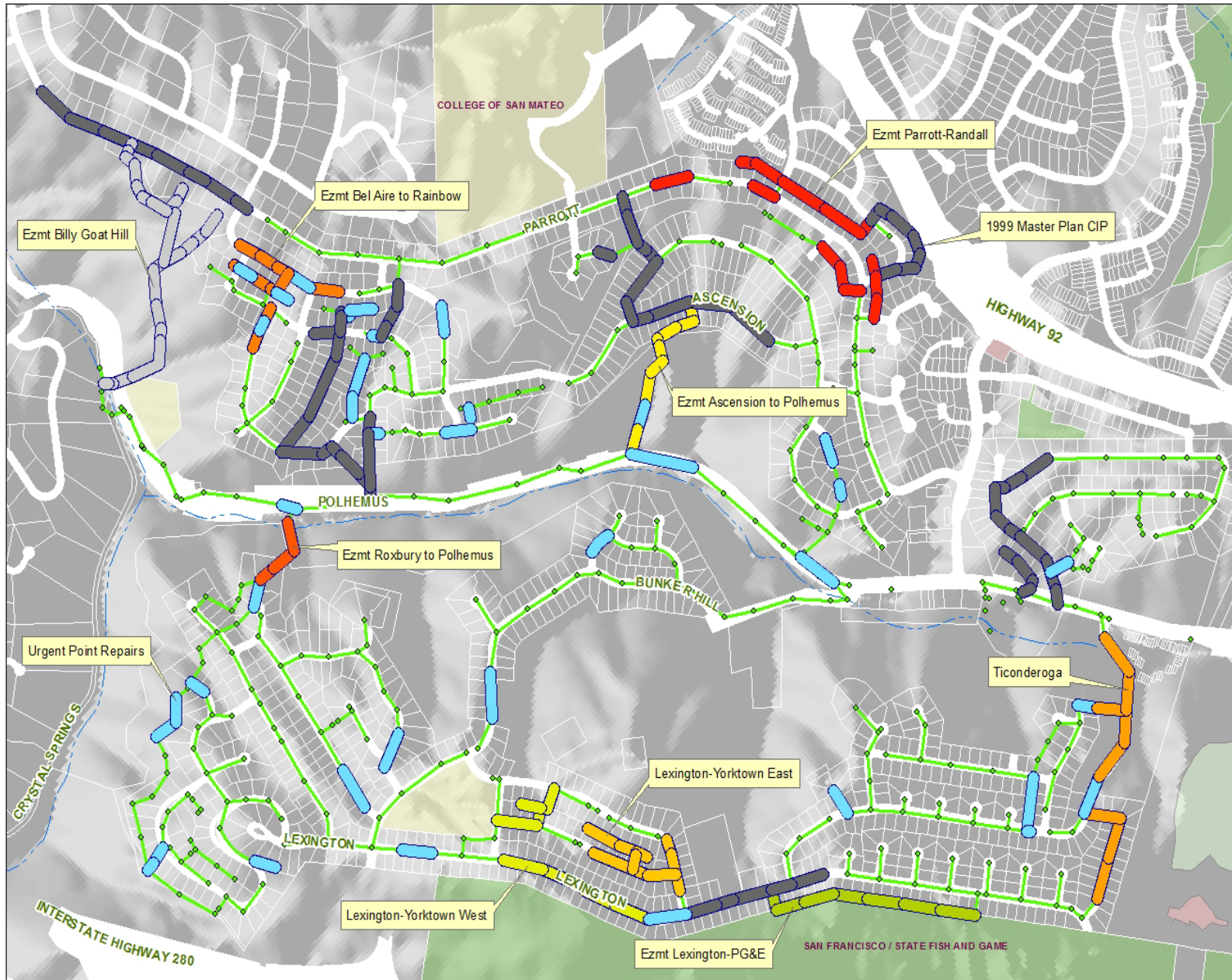


Crystal Springs
County
Sanitation District

Project
Completed in
2014 (SRF Loan)

Legend

- 1999 Master Plan CIP
- Urgent Point Repairs
- Ezmt Parrott-Randall
- Ezmt Billy Goat Hill
- Ezmt Roxbury to Polhemus
- Ezmt Bel Aire to Rainbow
- Ticonderoga
- Lexington-Yorktown East
- Ezmt Ascension to Polhemus
- Lexington-Yorktown West
- Ezmt Lexington-PG&E

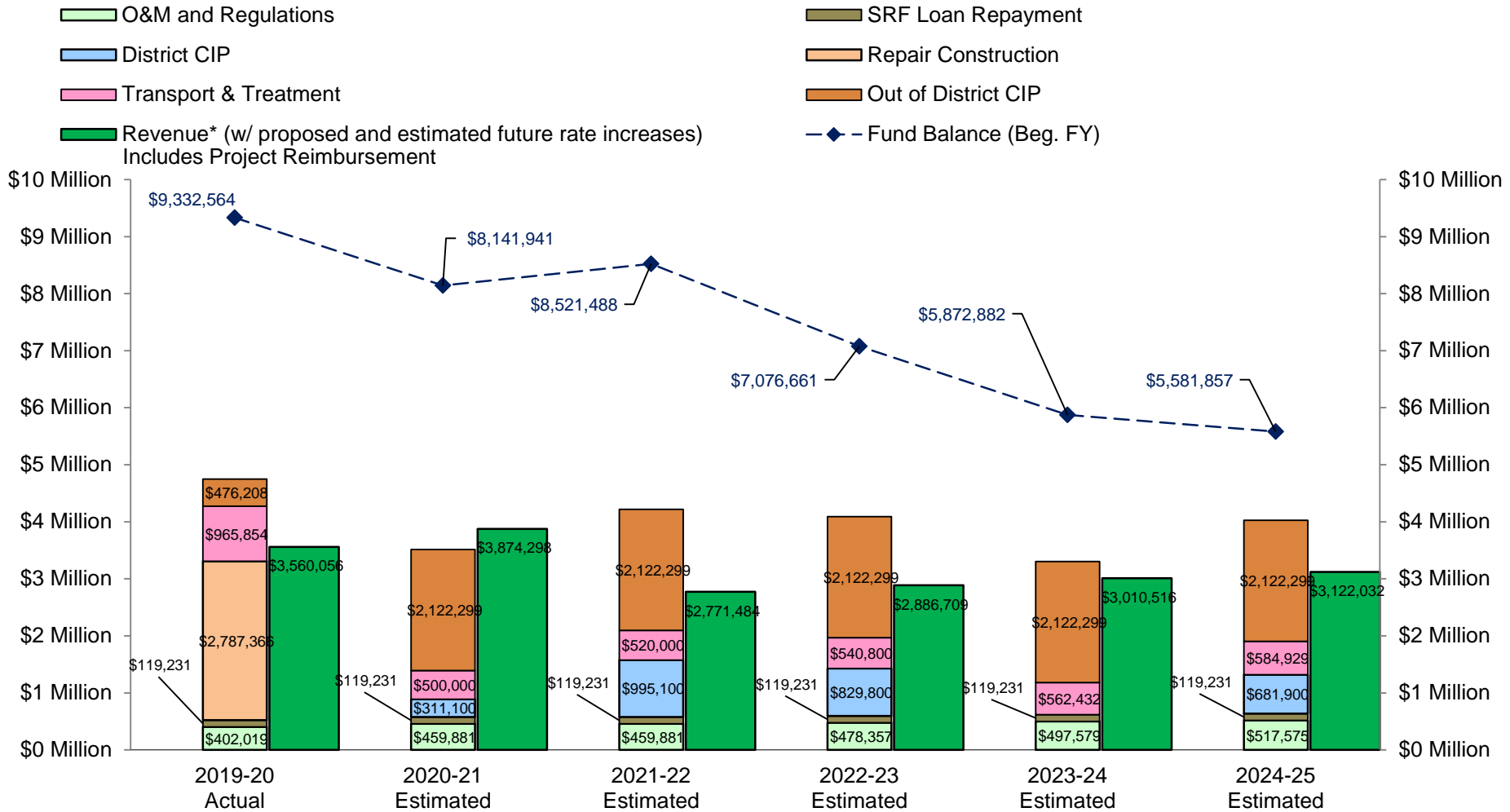


PRIORITY OF REMAINING CAPITAL IMPROVEMENT PROJECTS:

<u>Project Location</u>	<u>Estimated Cost</u>
<i><u>Planned for FYs 2020-21 and 2021-22</u></i>	
Urgent Point Repairs (42 Locations)	\$311,100
Easement along Billy Goat Hill	\$995,100
<i><u>Future Projects</u></i>	
Easement between Parrott and Randall	\$829,800
Easement from Bel Aire to Rainbow	\$681,900
Easement from Roxbury to Polhemus	\$233,200
Ticonderoga (Upper Portion)	\$998,300
Lexington-Yorktown East	\$684,600
Easement from Ascension to Polhemus	\$552,900
Lexington-Yorktown West	\$1,044,400
Easement between Lexington and PG&E	\$934,300
Total Cost for Future Projects ~ 16,700 feet of Pipe (18% of District mains)	\$6.954 M

ELEMENTS OF THE SEWER SERVICE RATES

Crystal Springs CSD Expenditure & Revenue Comparison



* Revenue may include: property taxes, interest, HOPTR, Sewer Service Charges, miscellaneous fees.
 FY 2019-20 and 2020-21 revenues include FEMA reimbursement of \$1M and \$1.23M (anticipated), respectively, for Seneca Lane Mudslide emergency response and permanent repair project.

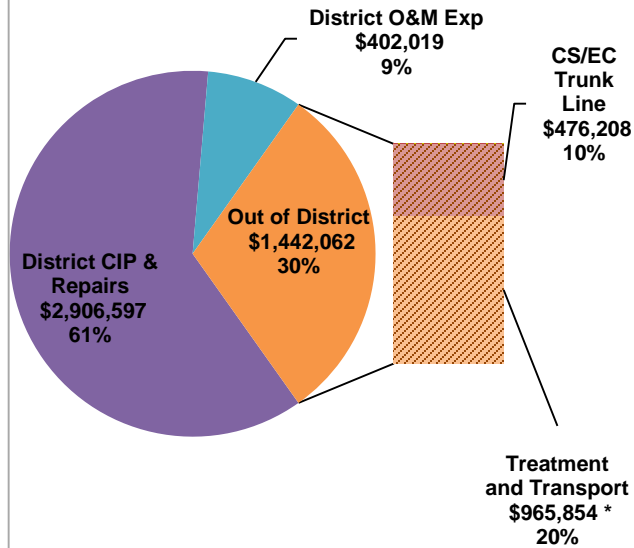
PROPOSED RATES

	Sewer Service Rates (\$/Year Per Equivalent Residential Unit)			
	Current Rate FY 2020-21	Proposed Rates		
		FY 2021-22	FY 2022-23	FY 2023-24
Crystal Springs County Sanitation District	\$1,585	\$1,664 <i>(+ \$79/yr or \$6.58/mo) 4.98% increase</i>	\$1,747 <i>(+ \$83/yr or \$6.92/mo) 4.99% increase</i>	\$1,834 <i>(+ \$87/yr or \$7.25/mo) 4.98% increase</i>

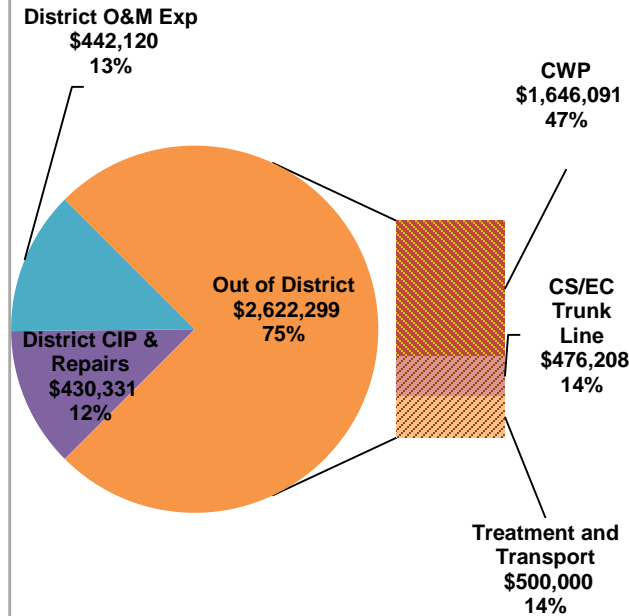
The proposed rate increases for the three fiscal years will support the anticipated annual CWP debt payments to City of San Mateo.

FISCAL YEAR ACTUAL AND PROJECTED REVENUE REQUIREMENTS

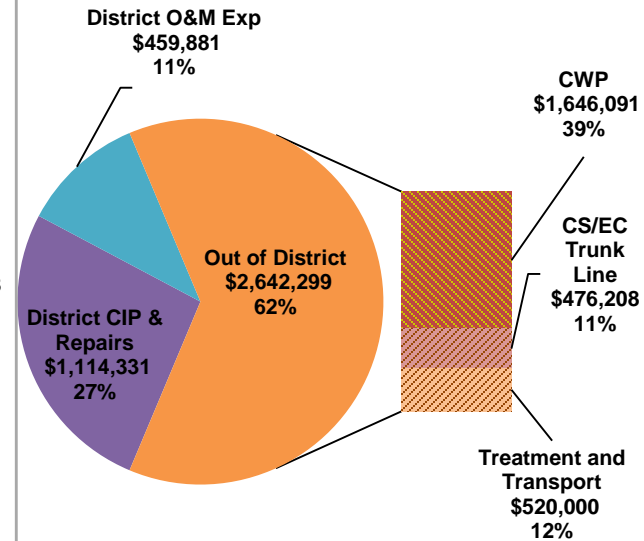
**FY 2019-20 Actual
(Rate - \$1,485/ERU)**



**FY 2020-21 Estimated
(Rate - \$1,585/ERU)**



**FY 2021-22 Estimated
(Proposed Rate - \$1,664/ERU)**



* Out of District cost for Treatment and Transport in FY 2019-20 include portion of Clean Water Program administrative costs paid to City of San Mateo with quarterly Treatment and Transport billings.

RATE SETTING TIMELINE

Key Dates	Actions
April 13, 2021	Sent all property owners information about proposed rate and timing of meeting with property owners.
April 22, 2021	Meeting with property owners to discuss the proposed rates, factors involved in establishing rate, and seek property owner input.
May 18, 2021	Introduce Ordinance with proposed sewer service rates and set Public Hearing for July 20, 2021.
June 3, 2021	Send Proposition 218 notice (45 days prior to public hearing) to property owners with proposed rates.
July 20, 2021	Hold public hearing, adopt Ordinance setting rates, and adopt FY 2021-22 Sewer Service Charges Report based on the adopted rate.



**Emergency Response
24 Hours a Day, 7 Days a Week**

Mainline (Blockage)

Customer Sewer Laterals

**Call (650) 363-4100 to Report
Sewer Overflows**



THANK YOU!

Questions, Comments, and Input

Please e-mail comments and questions to:
sewers@smcgov.org

Information is available on our website at:
<https://publicworks.smcgov.org/rates2021>



**The toilet is only meant
to flush the three P's—
pee, poop and paper.**
toilet

